

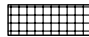
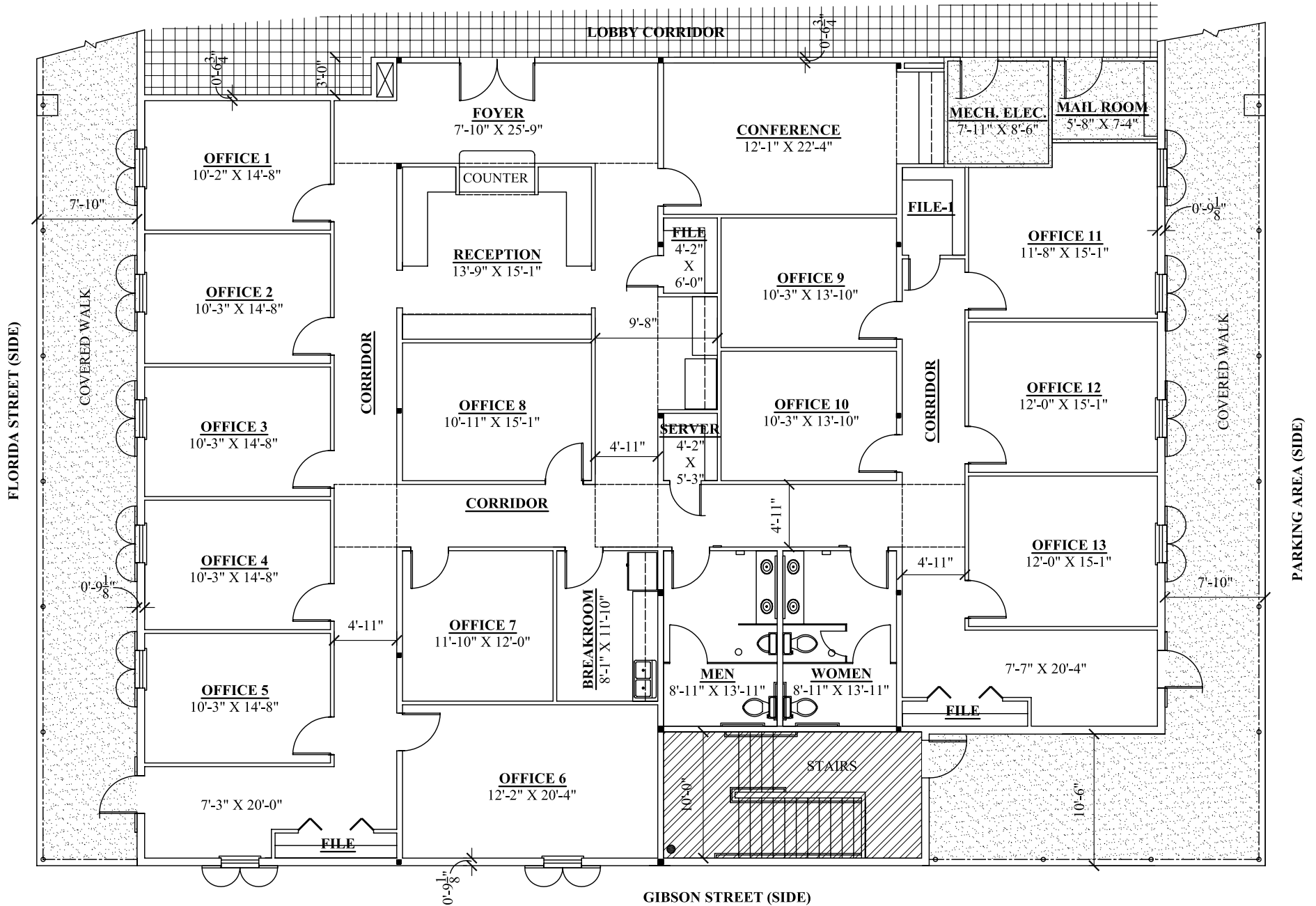


GROUND FLOOR PLAN

TOTAL 10,974 SF BUILDING AREA

| | | | |
|--|---|---|--|
|  | LIMITED COMMON ELEMENT FOR ST. JOHN RESIDENTIAL UNITS |  | ST. JOHN COMMERCIAL UNITS |
|  | COMMON ELEMENT FOR ST. JOHN COMMERCIAL UNITS |  | COMMON ELEMENT TO BOTH ST. JOHN RESIDENTIAL UNITS AND COMMERCIAL AREAS |

| | |
|--|-------------------|
| COVERED EXTERIOR WALK | 2,595 SF. |
| SUITE "1" | 4,632 SF. |
| SUITE "2" | 4,701 SF. |
| LOBBY, ELEVATOR, STAIRS, EQUIPMENT ROOM | 1,071 SF. |
| ELEC. & MAIL ROOMS | 461 SF. |
| TOTAL | 13,569 SF. |



SUITE "2" - GROUND FLOOR PLAN

PERCENTAGE INTEREST OF COMMON AREA - 16.91 %

- | | | | |
|---|---|---|--|
|  | LIMITED COMMON ELEMENT FOR ST. JOHN RESIDENTIAL UNITS |  | ST. JOHN COMMERCIAL UNITS |
|  | COMMON ELEMENT FOR ST. JOHN COMMERCIAL UNITS |  | COMMON ELEMENT TO BOTH ST. JOHN RESIDENTIAL UNITS AND COMMERCIAL AREAS |

SUITE "2"

TOTAL OFFICE AREA - 4,701 SF.